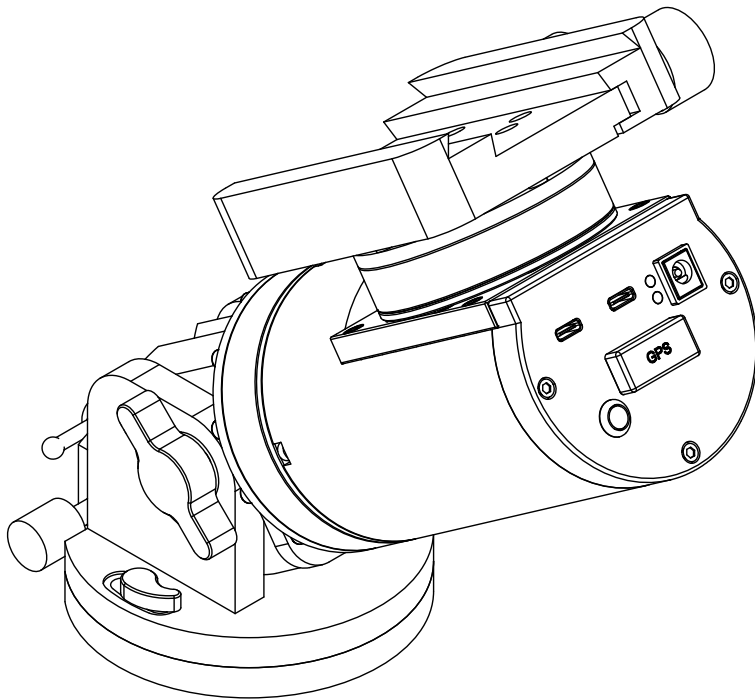


WARPDRIVE WD-17S Harmonic Equatorial Mount

User Guide



Preface

Thank you for choosing the WARPDRIVE WD-17S Servo Direct-Drive Harmonic Equatorial Mount by WarpAstron. We are proud to offer you a high-precision equatorial mount for astrophotography that combines the advantages of Servo Direct-Drive technology with portability.

The WD-17S utilizes a revolutionary servo motor direct-drive harmonic reducer as its driving mechanism, with no additional reduction gears. With the support of high-precision encoders, it achieves superior guiding accuracy and is a truly low-backlash harmonic equatorial mount. Compared to traditional equatorial mounts using stepper motor drive systems, the servo motor drive offers consistent high precision, silent operation during tracking and GOTO, with maintenance-free.

This user guide is based on the default factory configuration. Therefore, the product you receive may differ from what is described in this guide. To ensure that you have the most up-to-date information, please visit our official website (www.warpastron.com) to access the latest user guide.

To ensure your safety when using this product and to prevent any unexpected property damage, it is crucial to thoroughly read this user guide before your initial use. Make sure you have a complete understanding of the safety precautions and standard operations for using the product.

Revision Log


Version	Date	Revisions Content
V1.0	2023.3	Initial Release
V1.1	2023.8	Update Mount Base Interface Diagram and ASI AIR Connection Guide


Table of Contents

1 Safety Instructions	5
2 Product Overview	7
2.1 Introduction	7
2.2 Specifications	8
3 Installation and Usage	12
3.1 Connect mount to the Tripod/Pier Extension	12
3.2 Altitude Range Adjustment	15
3.3 Altitude Fine Adjustment	17
3.4 Azimuth Fine Adjustment	18
3.5 Telescope (OTA) Installation	20
3.6 Cable Connection	23
3.7 ASCOM Driver Installation and Configuration	25
3.8 ASIAIR Connection Instruction	29
4 Appendix	31
4.1 Warranty	31
4.2 Drawings	33

1 Safety Instructions

In order to make safety precautions more easily understandable to readers, this user guide will use the following symbols and informational cues to explain risks of different categories and levels:

 WARNING	Failure to adhere to safety instructions of this nature may result in personal injury to the user. Users are strongly urged to comply with such instructions and avoid prohibited actions.
--	--

 CAUTION	Failure to adhere to safety instructions of this nature may result in equipment damage or other property losses. Users are strongly urged to comply with such instructions and avoid prohibited actions.
--	--

NOTICE	Users should take note of and must comply with the requirements outlined for product use. Users are strongly encouraged to follow these instructions and requirements.
---------------	--

The various safety precautions in this user guide are designed to protect your personal safety and property. Users should read and fully understand the safety precautions before engaging in any operations.

Below is a safety summary from this user guide that you should adhere to during the initial installation and use of the equatorial mount:

 **WARNING**

- Do not touch power cables while your hands are wet, as it may lead to electric shock.
- Do not pull or tug on the power cord, ensure that the power cord is insulated and in good condition before use to prevent electrical short circuits, fires, or electric shock.
- When using a battery as the power source, make sure to use the DC plug with the correct polarity to avoid incidents such as short-circuiting and battery combustion.
- When transporting or installing the equatorial mount, ensure a firm and secure grip to prevent accidental drops, which could lead to injuries to your feet or other parts of your body.
- When adjusting the angles or installing the equatorial mount, avoid sudden, forceful movements to prevent inadvertent contact with protruding components or edges that could result in scratches or injuries. It is advisable to wear gloves when operating in cold conditions.
- Keep children away from the equatorial mount and its related accessories. This product contains small components that could pose a choking hazard if accidentally swallowed by children. Children under the age of 12 should not operate this product. Minors under the age of 18 could operate and use this product under the guidance of a guardian or adult supervisor.

 **CAUTION**

- If you encounter any unusual noises or smoke from the equipment during use, immediately disconnect the power and contact Customer Support.
- Do not attempt to disassemble the equatorial mount on your own, as it may result in product damage or void the warranty.
- Handle the equatorial mount with care to avoid impact during transportation or handling.
- Before installing the mount, ensure that the compatible tripod is securely fastened on a flat and sturdy surface to prevent the mount from falling due to an unstable center of gravity.
- Place the equatorial mount stably on a flat surface. If the mount is placed on the base at an altitude other than 90 degrees, it may accidentally tip over and become damaged.

2 Product Overview

2.1 Introduction

This product is an equatorial mount that utilizes a harmonic drive as its reduction mechanism. It can be used as a German equatorial mount or an alt-azimuth mount for precise tracking and GOTO functionality in astronomical observation, astrophotography, and visual observation of celestial objects. This equatorial mount employs servo motor direct-drive technology as a revolutionary driving mechanism, offering advantages such as low backlash, high precision, and portability when compared to traditional equatorial mounts with stepper motors and multi-stage reduction mechanisms.

Key Features

High-precision servo motor direct drive

- The Right Ascension (RA) and Declination (DEC) axes are driven by servo motors equipped with high-precision encoders. This configuration ensures high positioning accuracy, silent operation, and eliminates drawbacks such as vibration and stepping that can occur with traditional stepper motor-driven systems.
- The motor shafts are rigidly connected to the harmonic input for direct drive, without the need for additional belts or planetary gear reduction mechanisms. This design eliminates issues associated with belt aging, tension variations, and backlash problems that can occur with planetary gear reducers, ensuring consistent precision.
- The guiding accuracy averages at approximately 0.2 to 0.5 arc-seconds RMS (Root Mean Square), indicating a high level of precision in tracking celestial objects.

Super Lightweight and Portable

- The equatorial mount itself has a weight of 3.8 kg, including the dovetail plate adapter, supporting both Vixen and Losmandy styles.

GPS

- Built-in GPS Positioning Module, Supports Multiple Positioning Systems such as GPS and BeiDou.
- Automatic Date, Time, and Location Setting at Startup

Full Altitude Adjustment

- Supports Full 0° to 90° altitude adjustment with 15° range per step for coarse adjustment.
- Alt-azimuth mode at 90° altitude, mode switching via Hand Controller .

2.2 Specifications

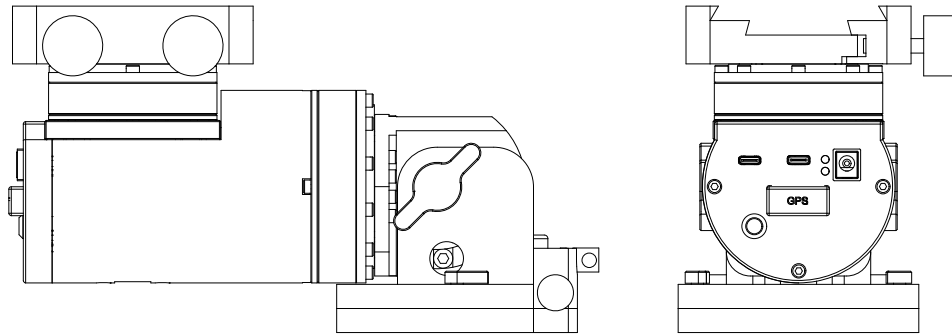


Figure 2-1: Equatorial Mount Diagram

Table 2-1: Specifications

Project	Description
Equatorial Mount Type	German Equatorial Mount / Altazimuth Mount
Reducer	RA: 17-100 Harmonic Drive DEC: 14-100 Harmonic Drive
Motor Type	Brushless DC Servo Motor (BLDC)
Transmission Mode	Motor Shaft Direct Drive
Maximum Load ₁	15kg (Without counterweight) / 20kg (With counterweight)
Weight	3.8 kg (Vixen & Losmandy)
Material	6061 Aluminum Alloy, 304 Stainless Steel, Acrylonitrile Butadiene Styrene (ABS)
Surface Treatment	Anodizing and Anti-Rust Coating
Brake Protection	Right Ascension Axis Electromagnetic Brake (Brake Torque 20Nm)
Adjustment Range	Altitude: 0 to 90 degrees Altitude Fine Adjustment: 15 degrees Azimuth Fine Adjustment: +/- 8 degrees
Control System	OnStep
Hand Controller ₂	Wire/Wireless, Rechargeable Battery, Charging Power 5V 1A
Communication Protocol	ASCOT, INDI, LX200 etc.
Communication Interface	USB Type-C
Guiding Interface	ST4 (USB Type-C)
Wireless Communication ₃	Bluetooth/WIFI
Power Supply	12V 5A 5.5*2.1mm
Power Consumption	Standby 0.3A, GOTO 1~2A
Electrical Protection	Overcurrent Protection, Surge Protection

Note:

1. The maximum load of 15kg without a counterweight is based on the average maximum torque load on the Right Ascension (RA) axis harmonic reducer, measured 20cm from the bottom of the dovetail plate adapter. Users should consider to use counterweights in a manner that ensures the stability of the tripod, taking into account the equipment's center of gravity, to avoid compromising guiding accuracy or the risk of tipping due to the absence of a counterweight.
2. The default factory mode of the hand controller may vary depending on the sales region or customer customization.
3. Bluetooth and WiFi wireless communication cannot operate simultaneously. The default factory setting is WiFi wireless communication.

Parts List

Here is the parts list for the factory packaging:

Table 2-2 Parts List

Serial Number	Name	Quantity
1	WD-17S Harmonic Equatorial Mount	1
2	Smart Hand Controller (SHC)	1
3	Power Cord (DC 5.5*2.1mm)	1
4	USB Type A to USB Type C Data Cable	1
5	4mm Allen Wrench	1
6	Transport Aluminum Case	1

Note: This user guide may not be updated when there are changes in the factory configuration. If the product you receive does not match the list above, please refer to the order configuration information at the time of purchase or contact the sales representative for your order.

The various parts of the mount are labeled as follows:

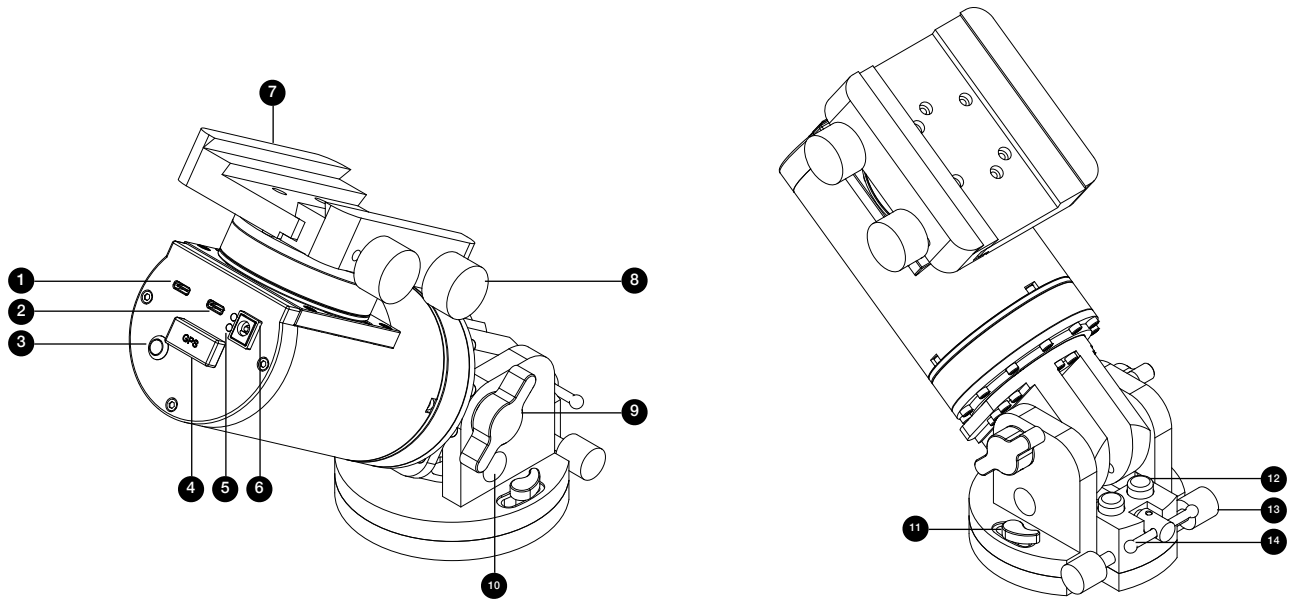


Figure 2-2 Parts Diagram

Table 2-3 Parts description

Serial Number	Name	Serial Number	Name
1	PC Data Cable Port (USB Type-C)	8	Adapter Locking Knobs*2
2	ST-4 Guiding / SHC Wire Port (USB Type-C)	9	Altitude Locking Knob*2
3	Power Switch	10	Altitude Range Adjustment Screw
4	GPS Antenna Casing	11	Azimuth Locking Knob*2
5	Power Indicator Light Status Indicator Light	12	Horizontal Bubble*2
6	DC Power Connector	13	Azimuth Fine Adjustment Knob*2
7	Dovetail Plate Adapter (Vixen/Losmandy)	14	Altitude Fine Adjustment Knob

3 Installation and Usage

3.1 Connect mount to the Tripod/Pier Extension

The tripod serves as the supporting structure for the equatorial mount and can include options such as photography extendable tripods, specialized astronomy tripods, or piers. Pier extension are used to increase the mounting height of the equatorial mount relative to the tripod, reducing the risk of collisions between the equatorial mount and the tripod during its rotation, especially when carrying OTA.

WARNING

- The equatorial mount can cause injury if it falls due to its own weight. Please be cautious and ensure a firm grip when transporting and securely installing the equatorial mount to prevent it from slipping out of your hands.
- When transporting and installing the equatorial mount, be careful to avoid crushing or injuring your fingers or hands.

CAUTION

- Do not forcefully strike or press the equipment. If you encounter resistance during installation, please verify if any interference or mismatches existed, and avoid using excessive force.
- Do not install the equatorial mount on an unstable or uneven surface, as it may lead to the equatorial mount or tripod tipping over, causing equipment damage.
- Do not use a tripod that has threads incompatible with the equatorial mount's mounting mechanism.
- Do not place the equatorial mount on the tripod or an unstable surface without completing the installation and securing it properly. This will prevent the equatorial mount from being in an upright position and potentially tipping over, causing equipment damage.

NOTICE

- Please use screws and tools that are compatible with the installation thread.
- When the equatorial mount's load exceeds 10kg or when using a pier extension, it is advisable to prioritize the M6 threaded connection method for improved stability.
- The threaded length of the locking screws should not exceed 10mm to avoid issues such as inhibiting azimuth rotation or damaging the equatorial mount due to excessive length.

The equatorial mount baseplate connection, as shown in Figure 2-3, has two types of threaded connection methods.:

- The 3/8-inch thread is located at the center of the baseplate and is primarily used for usually attaching a photographic tripod.
- The three M6 threads are evenly spaced at 120-degree intervals and are primarily used for connecting a pier extension or a specialized astronomical tripod.

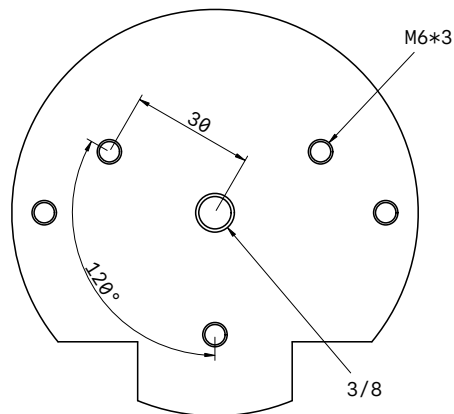


Figure 2-3: Equatorial Mount Baseplate

The following is an introduction to the installation steps for equatorial mounts:

- The equatorial mount is directly connected to the tripod.
- The equatorial mount is connected to the tripod via an extension pillar.

Installation Method 1: Direct Connect Mount to Tripod

A Place the tripod on a level surface and adjust the tripod to make it level.

B Adjust the equatorial mount to the vertical position at **an Altitude of 90 degrees** and place it on the tripod's mounting plate. If the equatorial mount is not in a perfectly vertical position, ensure that you hold it steady with your hand during the installation process to prevent it from falling.

C Use either **a 3/8-inch screw** or **three M6** screws to connect the equatorial mount and the tripod, and tighten them securely.

D After tightening, perform a thorough check to confirm that the equatorial mount is securely fastened and doesn't have any wobbling or movement. This completes the installation of the equatorial mount.

Installation Method 2: Connect Mount to Tripod via an Extension Pillar

A Place the tripod on a level surface and adjust the tripod to make it level.

B Place the extension pillar on the tripod's mounting plate, and use **three M6 screws** to connect the extension pillar and the tripod, tightening them securely.

C Adjust the equatorial mount to the vertical position at **a altitude of 90 degrees** and place it on the upper plate of the extension pillar. If the equatorial mount is not in a perfectly vertical position, ensure that you hold it steady with your hand during the installation process to prevent it from falling.

D Use **three M6 screws** to connect the equatorial mount to the extension pillar and tighten them securely.

E After tightening, perform a thorough check to confirm that the equatorial mount, extension pillar, and tripod are all securely fastened with no wobbling or movement. This completes the installation of the equatorial mount.

3.2 Altitude Range Adjustment

The adjustment of the equatorial mount's altitude angle is divided into two steps: Altitude Angle Range Adjustment and Altitude Angle Fine Adjustment. The Altitude Angle Fine Adjustment has a range of 15 degrees. Therefore, when adjusting the altitude angle, you should first set the Altitude Angle Range to match your approximate location within a 15-degree range. Then, proceed to the Altitude Angle Fine Adjustment for precise alignment.

⚠ CAUTION

- Do not place an equatorial mount that is not in a vertical position at 90 degrees on its base as the contact surface on a tabletop or any other location. An equatorial mount that is not at a 90-degree angle may tip over easily due to an unstable center of gravity.
- Please avoid from adjusting the altitude angle range while your telescope equipment is still mounted on the equatorial mount. Prior to making any altitude angle adjustments, be sure to remove your telescope to avoid any potential damage to the equipment.
- Be sure to securely tighten the altitude adjustment locking knobs to their maximum extent after completing the altitude angle range adjustment. This will prevent any potential equipment wobbling or slipping due to insufficient locking.
- Please use a matching or compatible manual wrench to adjust the altitude adjustment gear screws. Avoid using power tools or tools with incompatible specifications, as they may damage the equipment.

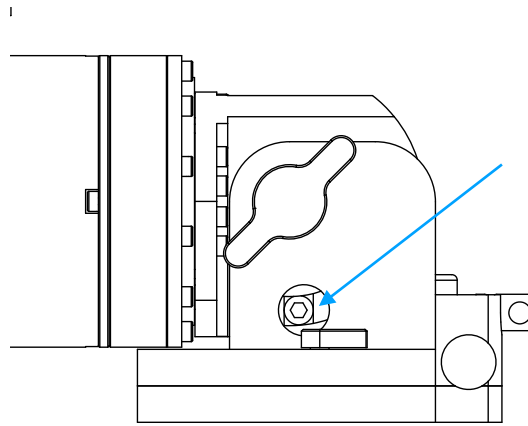
NOTICE

- The equatorial mount is shipped with a altitude angle of 0 degrees in its factory aluminum case. Therefore, it's essential to adjust the altitude angle range before using it for the first time. This adjustment ensures that the equatorial mount is set to the appropriate altitude for your observing location and prevents any issues during operation.
- After loosening the altitude adjustment gear screws, adjust them to the appropriate angle and promptly tighten them. Never move or transport the equatorial mount without securing these screws in place.
- The equatorial mount's altitude adjustment range is 15 degrees per position.

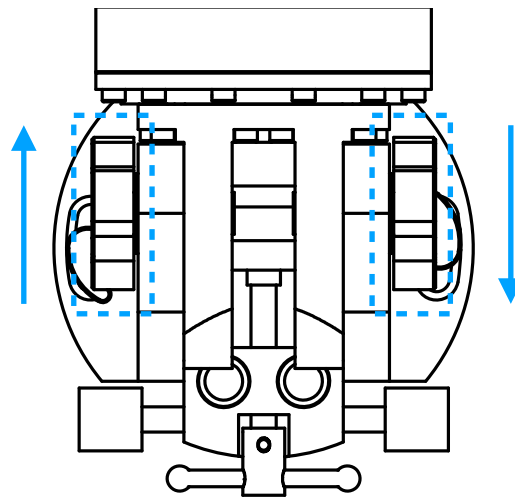
Operation Steps

A Confirm that the equatorial mount is securely installed on the tripod or attached to the extension pillar, with no risk of tipping over.

B Rotate the altitude adjustment fine-tuning knob to align the **range adjustment screw** (as indicated by the arrow in the diagram below) completely within the view of the adjustment hole.



C Rotate counterclockwise to loosen the altitude locking knobs on both sides of the equatorial mount (rotate the two knobs in opposite directions, as indicated by the arrows in the diagram below).



D Support the bottom of the equatorial mount body by hand to prevent it from falling, and use a **4mm hex wrench** to rotate the **range adjustment screw** counterclockwise until it is completely loosened.

E After loosening the **range adjustment screw**, manually adjust the equatorial mount body to the appropriate altitude position. Then, use the 4mm hex wrench to rotate the screw clockwise until it is fully tightened into the thread.

F Once you have ensured that the **range adjustment screw** is fully tightened, you can release your hand from supporting the equatorial mount. Then, rotate the altitude locking knobs on both sides of the equatorial mount clockwise until they are fully locked (rotate the two knobs in opposite directions).

3.3 Altitude Fine Adjustment

Altitude Fine Adjustment is used to make finer adjustments to the altitude of the polar axis after completing the altitude range adjustment.

NOTICE

- When performing altitude fine adjustments within a small range (± 5 degrees), there is no need to loosen the altitude locking knobs. However, if you need to make larger altitude adjustments, it is advisable to loosen the altitude locking knobs before making the adjustments in order to reduce wear on the screw.
- Clockwise rotation of the altitude fine adjustment knob increases the altitude, while counterclockwise rotation decreases the altitude.

Operating Steps

A Confirm the range of angles that need fine adjustment. If the angle adjustment required is greater than 5 degrees, it is advisable to first loosen the altitude locking knobs.

B Rotate the **altitude fine adjustment knob** clockwise or counterclockwise to the desired angle. One full rotation of the knob corresponds to an altitude adjustment of 1.5 degrees.

3.4 Azimuth Fine Adjustment

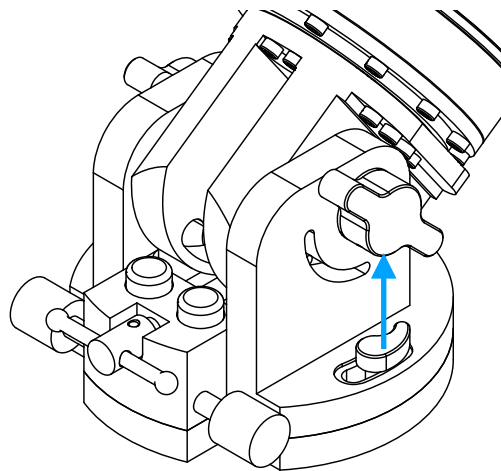
The equatorial mount's azimuth locking knob and azimuth fine adjustment knob are used to precisely adjust the polar axis. They are located on both sides of the equatorial mount.

NOTICE

- The azimuth fine adjustment range is ± 8 degrees. Before performing adjustment, start by roughly aligning the tripod to the NCP or SCP that depending on your hemisphere.
- Do not fully loosen or unscrew the azimuth locking knob, as this may result in the equatorial mount losing its stability, potentially causing tilting or significant polar alignment errors

Operating Steps

A The azimuth locking knob is in the retracted position. Lift the azimuth locking knob upward (as indicated by the arrow in the diagram) and then rotate it to a convenient angle for operation, then release the knob to allow it to retract.



B Rotate the azimuth locking knobs on both sides of the equatorial mount counterclockwise to slightly loosen the locking.

C Rotate the azimuth fine adjustment knob by counterclockwise on the side where you intend to orient the equatorial mount. Then, rotate the azimuth fine adjustment knob clockwise on the opposite, the mount will rotate to your desired direction. One full rotation of the fine adjustment knob corresponds to 1 degree rotation in azimuth.

- When you need to **turn the equatorial mount to the left**, loosen the **azimuth fine adjustment knob** on the left side counterclockwise, and then tighten the **azimuth fine adjustment knob** on the right side clockwise.
- When you need to **turn the equatorial mount to the right**, loosen the **azimuth fine adjustment knob** on the right side counterclockwise, and then tighten the **azimuth fine adjustment knob** on the left side clockwise.

D After adjusting the equatorial mount to the desired azimuth, rotate the azimuth locking knobs on both sides clockwise to securely lock them in place, completing the azimuthal fine adjustment.

3.5 Telescope (OTA) Installation

This chapter will introduce the operational steps for installing the telescope on the equatorial mount.

WARNING

- Telescopes, cameras, and other equipment can be heavy, so when handling and installing them, be careful to avoid dropping them to prevent injury or damage your equipment.

CAUTION

- Before installing equipment such as a telescope, it is essential to ensure that its weight within the permissible range of the equatorial mount. Overloading (load torque > 38Nm) can potentially lead to damage to the equatorial mount and other equipment.
- The equatorial mount's electromagnetic brake can provide a braking torque of 20Nm in the event of a power failure. If the installed telescope equipment exerts a torque exceeding 20Nm, there is a risk of brake failure and potential equipment drop. **If you still need to use the equatorial mount with a load torque exceeding 20Nm, please ensure that you power on the equatorial mount before mounting the telescope. Also, make sure that the equatorial mount remains powered on while the load is in place, until the load is removed from the equatorial mount.**
- Before removing your hand from the equatorial mount and ensuring that the telescope equipment is securely fastened to the mount, to prevent the telescope equipment from falling and getting damaged due to improper locking.
- When the equatorial mount is in operation, any collision between the telescope equipment and the equatorial mount can result in severe damage to both the mount and the equipment. Before starting the rotation of the equatorial mount, it is crucial to inspect whether there are any potential collision position for the telescope and its mounted equipment during movement or rotation. Take preventive measures such as using an extension pillar, adjusting the equipments' position, and setting limits in the mount system to mitigate the risk of collisions.
- Please ensure that the total combined load weight on the equatorial mount must not exceed 20kg to avoid damaging the harmonic drive reducer bearings.

NOTICE

- When installing telescope, it is essential to consider the center of gravity and other installation requirements specified by the manufacturers of the telescope and related equipment.
- Depending on the dovetail plate type compatible with the telescope, choose either Losmandy (wide) or Vixen (narrow) for the connection. Before installation, make sure that the dovetail plate you are using is of the standard Losmandy or Vixen size.
- The equatorial mount supports a standard M12 counterweight shaft.
- For large reflector or catadioptric telescopes, due to their complex shapes and center of gravity with additional equipment, it is crucial to accurately assess the equatorial mount's load capacity before use.

Operating Steps

Part I Calculate the Load Capacity

To ensure the accuracy of equatorial mount operation and avoid accelerated wear or damage to its mechanical components due to overloading, it is important to calculate the weight/torque of the load that the equatorial mount is intended to carry and assess whether the load torque is acceptable for the mount.

Load Weight: The total weight of the telescope and its attached accessories, measured in kilograms (kg).

Counterweight Weight: The total weight of the counterweight and counterweight shaft, measured in kilograms (kg).

Load Torque: The torque exerted by the telescope and its attached accessories on the equatorial mount, measured in Newton-meters (Nm).

Load Moment of the Force: The distance between the center of gravity of the telescope and its attached accessories and the axis of the equatorial mount's right ascension, measured in centimeters (cm).

Counterweight Moment of the Force: The distance between the center of the counterweight and the axis of the equatorial mount's right ascension, measured in centimeters (cm).

$\text{Load Torque} = \text{Load Weight} * \text{Load Moment of the Force} * 0.098$

$\text{Counterweight Torque} = \text{Counterweight Weight} * \text{Counterweight Moment of the Force} * 0.098$

A-1 Evaluating the Load Capacity WITHOUT Counterweight

When using the mount without counterweight, the maximum load should meet the following condition:

Load Torque < 38Nm

A-2 Evaluating the Load Capacity WITH Counterweight

When using the equatorial mount with counterweights, the maximum load should meet the following condition:

Load Torque - Counterweight Torque < 38Nm

NOTICE

- The guiding performance of the mount is influenced by various factors such as load torque, moment of inertia, tripod stability, and more. Even if the mount meets the load capacity requirements when used without counterweight, the actual guiding performance can still be impacted by factors like instability or deformation of the tripod due to a heavy load. Users should conduct a comprehensive assessment considering factors such as the capacity of tripod, equipment, and environmental conditions. Properly using counterweight can help

improve system stability and enhance guiding performance. It is advisable to keep the maximum load torque within 25Nm for optimal performance.

Part II Telescope Installation

Operating Steps

A Rotate the two dovetail plate **Adapter Locking Knobs** counterclockwise to loosen the groove clamps.

B Depending on the type of dovetail plate used by the telescope (Vixen or Losmandy), place the dovetail plate into the corresponding dovetail groove.

C Rotate the two dovetail **Adapter Locking Knobs** clockwise to securely fasten the telescope as tightly as possible within the adapter's groove.

D Check and confirm that the telescope's dovetail plate is securely locked in place, with no loose or unsecured conditions.

NOTICE

- The center of gravity of the telescope should be aligned as closely as possible with the center position of the dovetail plate adapter or the distance between them should be minimized. Additionally, adjustments to the telescope's position should be made based on accessories such as filter wheels, motorized focusers, cameras, etc., to reduce the risk of collisions during mount movements.

3.6 Cable Connection

The mount requires various cable connections while in operation, such as DC Power Cable and USB PC Data cable.

WARNING

- Do not operate the power cable with wet hands as it may result in an electric shock.
- Avoid pulling or tugging on the power cable, and ensure that the insulation is intact before use to prevent electrical short circuits, fires, or electric shocks.
- **When using a battery as the power source, make sure it is a DC 12V power supply and use the correct polarity of DC plug to prevent incidents like battery combustion due to a short circuit.**
- Ensure that the power cable you use meets the voltage and current requirements of 12V 5A to prevent short circuits or improper equatorial mount operation due to insufficient cable capacity.

CAUTION

- Do not use USB cables with external or insulation damage, as it may lead to equipment damage.
- When using portable battery supply or AC power adapters, ensure that the power source used is a qualified product that has safety certification (CE certification).
- Do not insert USB cables connected to PCs or other voltage output interfaces into the ST4 USB Type-C port, as the voltage fluctuations caused by such cables may damage the mount control board.

NOTICE

- Please ensure the USB Type-C cable you are using is a data cable. Some USB Type-C cables may only support charging and cannot be used for regular data communication.
- The ST-4 guiding cable (USB Type-C to RJ12) is an optional accessory and is not included in the default factory configuration. If needed, please contact Customer Support.
- The Smart Hand Controller(SHC) is configured for wireless connection mode cannot be connected to ST-4 Wire Port. ST-4 Wire Port is not designed for charging purpose.
- When using SHC by wire connection, please connected it to mount by wire before mount power on, to avoid any potential mount issue if cable been plug in/off during operation.

Part I: Connect the Mount to Power Supply

A Insert **12V DC Power Cable** into the DC Port of the mount.

B After power supply connected, press the **Power Switch**, and the mount will power on. The power indicator light will be solid red.

Part II: Connect the Mount to PC via USB Data Cable

Note: The Mount support both USB cables Type-A to C and Type-C to C.

A Insert **USB Data Cable** with a USB Type-C connector into the mount's USB Type-C port labeled "PC".

B Insert the cable's the other end into the computer or astronomical equipment such as ASI AIR's USB Type-A port.

Part III: Connect Hand Controller to Mount via ST-4 Wire Port

Note: A USB 3.2 20pin Type C to C cable is required for SHC wire connection.

A Insert USB Data Cable with a USB Type-C connector into the mount's USB Type-C port labeled "ST4".

B Insert the other end of the cable with a USB Type C connector into the USB Type-C port on the top of the SHC.

3.7 ASCOM Driver Installation and Configuration

When connecting the mount to a Windows, the OnStep system of mount needs to have ASCOM platform software and driver installed on the PC. This allows software like NINA or Stellarium to connect to the mount. Before installing the ASCOM driver, you should first install the mount's Serial Port(COM) driver.

Please visit the official website's service and support page to download the drivers required.: www.warpastron.com

Please prepare the following driver files before installation:

- CP210X Windows Driver
- ASCOM Windows Driver
- OnStep ASCOM Driver

Part I: Serial Port Driver (CP2102 Driver) Installation

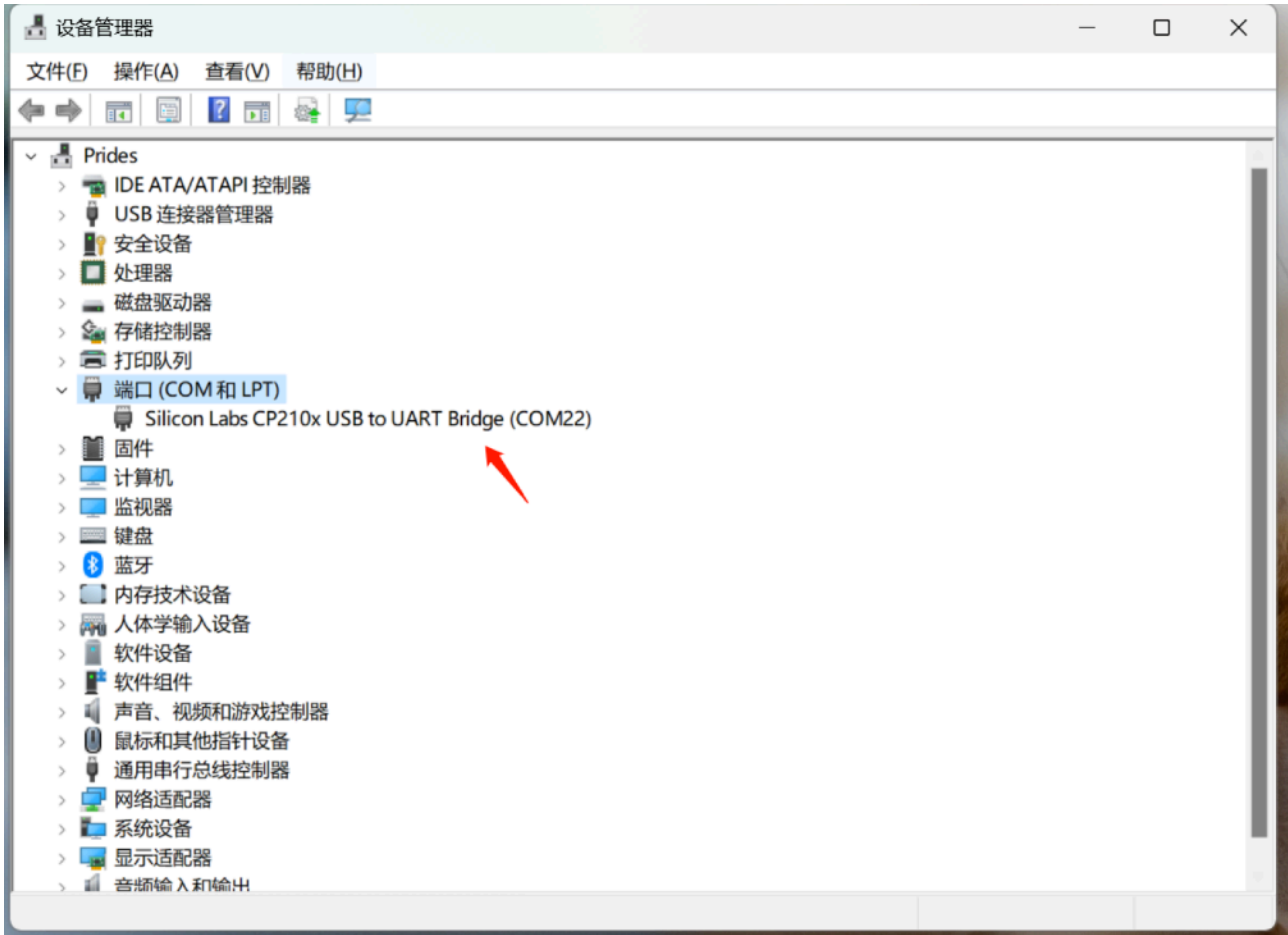
A Connect the mount to PC via a USB Data Cable, and plug in the 12V power supply to mount's DC Port. Press the Power Switch to turn it on.

B Unzip the "CP210X Windows Driver" compressed file.

C If you are using a Windows 64-bit system, please click on '**CP210xVCPInstaller_x64.exe**' and follow the prompts to complete the installation, as shown in the image below



D After the installation is complete, open the **Device Manager** on your computer. You should see the serial port “**Silicon Labs CP210x COMXX**”, indicating that the serial port driver installed successfully, as shown in the image below:



Part II: ASCOM Platform Installation

A Unzip the “ASCOM Windows Driver” compressed file.

B Run the “ascomPlatformXXX.exe” program by clicking on it and follow the prompts to complete the installation.

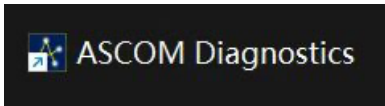
Part III: OnStep ASCOM Driver Installation

A Unzip the “OnStep ASCOM Driver” compressed file.

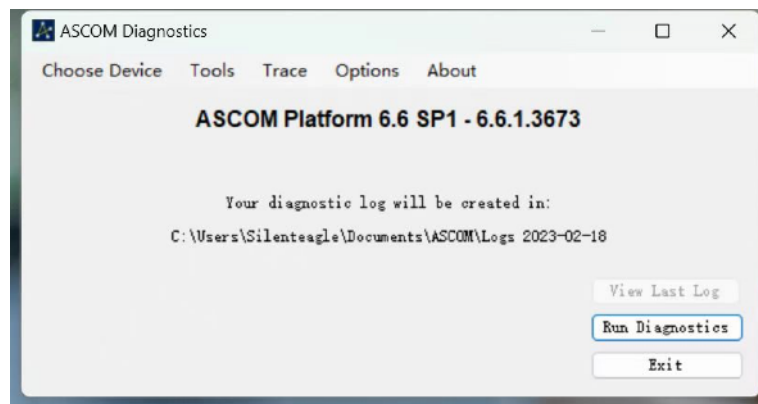
B Click to run the “OnStep Setup.exe” program and follow the prompts to complete the installation.

Part IV: Configuring OnStep ASCOM

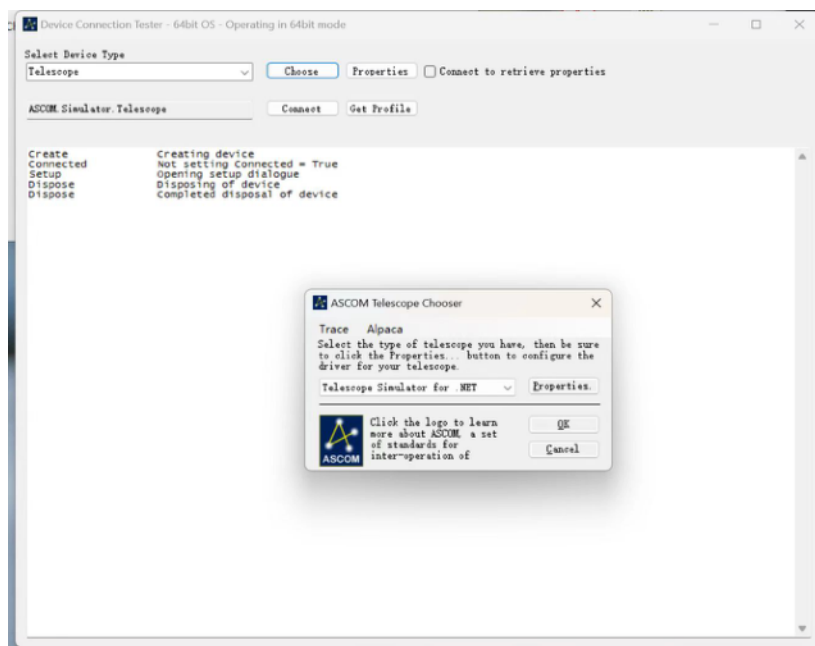
A Click to run the “ASCOM Diagnostics” icon on your computer desktop.



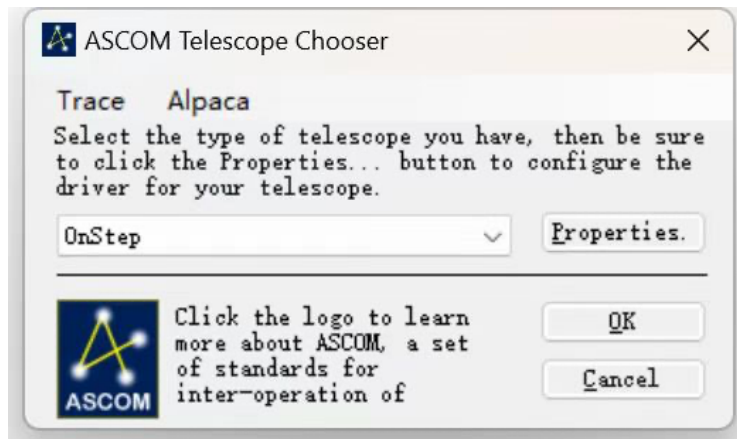
B Click on the “Choose Device” option in the window's menu bar to select a device.



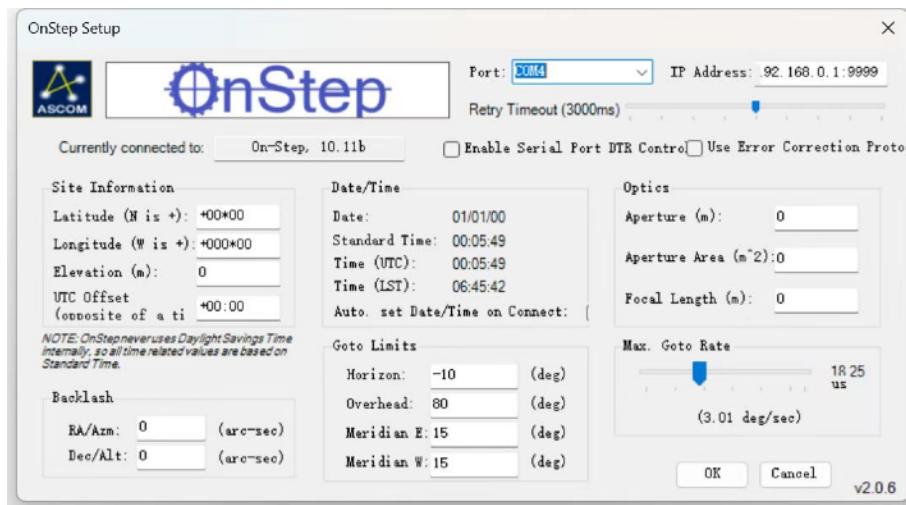
C Click “Choose” and select “OnStep Telescope” from the dropdown menu in the pop-up window.



D Click the “Properties” button to open the OnStep configuration panel.



E In the “Port” dropdown menu, select the mount's serial port identified by the computer, which should be “COMXX”. If the connection is successful, the panel will display information about the mount.



F After clicking “OK”, close the window. The OnStep ASCOM wired connection configuration is complete.

3.8 ASI AIR Connection Instruction

ASI AIR is a portable embedded astronomy computer. If you are using the ASI AIR, you can follow the steps below to connect the mount to ASI AIR.

Operating Steps

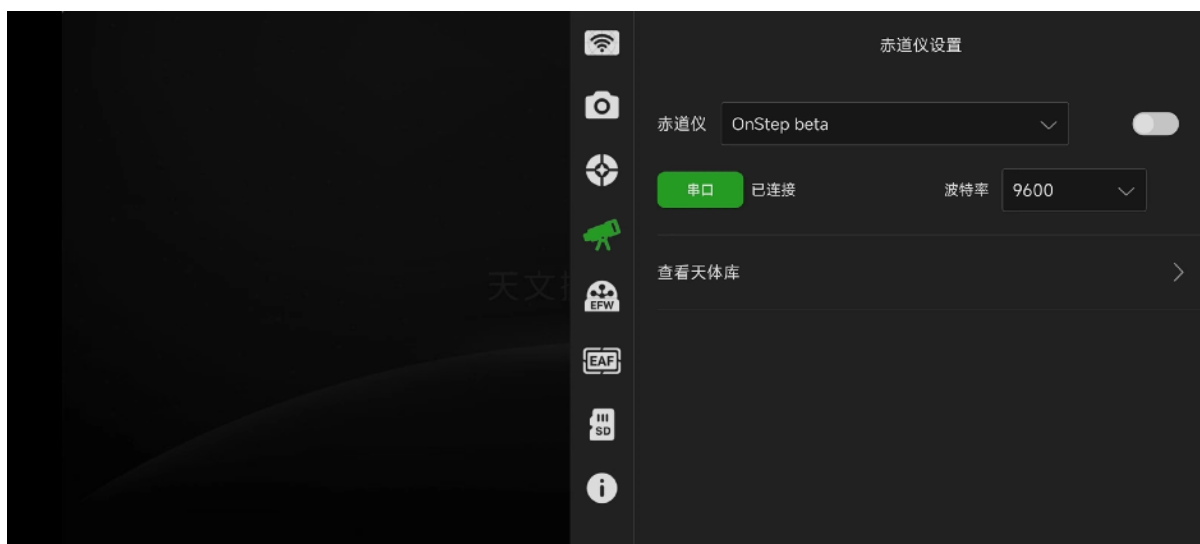
A Use a USB Data Cable to connect the mount's USB Type-C port labeled 'PC' to the ASI AIR's USB interface. Plug in the mount's 12V power supply, and press Power Switch to turn it on.

B Turn on ASI AIR power and complete the app connection.

C Open the ASI AIR mount settings and select 'OnStep Electronic' or 'OnStep beta' from the dropdown menu.



D Confirm that the serial port baud rate is set to the default "9600".



E Click the 'Connect' button to establish the mount connection.

NOTICE

- In the ASIAIR mount settings, it is recommended to enable the '**Automatic Homing**' option, allowing the equatorial mount to automatically return to the zero position after completing a capture.
- After connecting ASIAIR to the mount, always synchronize the Date/time, and Location information first with the equatorial mount, before continue other operations.
- During the polar alignment procedure using ASIAIR, if you encounter issues such as the mount not moving or moving incorrectly, please do not cancel or exit the app. Instead, wait for the polar alignment page to report an error. Then, perform the mount homing and restart the polar alignment process again.

4 Appendix

4.1 Warranty

- **Thank you for choosing WarpAstron's WARPDRIVE Harmonic Drive Equatorial Mount. We provide a 3-year free warranty service for products purchased by users from our company and authorized distributors. The warranty period starts from the day the user receives the product.**
- **The 3-year free warranty service provided by our company does not cover damages caused by accidents or normal wear and tear resulting from regular use, such as:**
 - Damage occurring after the expiration of the free warranty period.
 - Damage caused by external forces, such as dropping or collisions during operation.
 - Loss or damage resulting from improper use of the product, not following the product's user guide
 - Unauthorized disassembly, third-party repairs, modifications, or firmware flashing without explicit written authorization from WarpAstron's official customer service.
 - Damage caused by exposure to unsuitable environmental conditions, such as water immersion or exposure to rain.
 - Damage resulting from unforeseeable external forces.
 - Products for which the serial number and purchase records cannot be provided.
- For products that not in the scope of the free warranty, we can provide repair services to users, and charges will be assessed based on the specific circumstances.
- If the product has been intentionally damaged or severely damaged to the extent that it has no apparent repair value, our company reserves the right to refuse repair services.
- **Return Policy**
 - Customers who purchase products from our company or authorized dealers can enjoy a **7-Days No-questions-asked Return Policy** if the product is unused and both the product and packaging are in sealed/good condition. The return shipping cost is borne by the customer.
 - If customers discover quality issues within 15 days of receiving the product and contact our company or authorized dealer, and after official confirmation by our after-sales team that the product indeed has quality problems, we will provide a free exchange service.
- **Transportation Issues:** If customers receive a product with obvious packaging deformation or damage, they should immediately contact the official store or authorized dealer through which they placed the order. If the official customer service confirms and agrees, customers can refuse to accept the shipment and have it returned by the carrier. Our company or authorized dealer will then provide return or exchange services. If customers discover damage after accepting the shipment, they should provide proof of the product's external packaging or third-party certification from the carrier. If the official customer service verifies that the damage was caused during transportation, our company or authorized dealer will provide return or exchange services.

- Our after-sales service will be depending on the actual problems with the product and may include options such as firmware upgrades, sending replacement parts, factory repairs, or exchanges.
- For international customers, specific warranty terms and related costs may vary depending on the purchase channel. Please contact your dealer for further information.

4.2 Drawings

Note: The units in the drawings are in mm.

